

A crowning
achievement in
luxury living.



BCM
Pride

For the privileged,
discerning *few*.



BCM Pride is Kanchan Bagh's pride. Second-to-none when it comes to luxury, BCM Pride is for the discerning few for whom fine living is a part of everyday life. Coupled with the super luxury is the BCM Pride address - Kanchan Bagh - a most sought after locality and a picture of exclusivity. Full of greenery, and with a peaceful ambience, it is a stone's throw away from all modern conveniences. One of the poshest localities of Indore, Kanchan Bagh houses some of the who's who of the city. It is a perfect place for BCM Pride. While BCM Pride's architecture is worth beholding with its expansive style, sweeping grandeur and grand living spaces, its amenities are also worth emulating. Making living here more than worth it and a matter of great pride.

3-4 BHK super luxurious apartments





Redefining luxury.

An imposing, magnificent entrance lobby provides a grand welcome.





Opulence,
a way of *life*.

Super spacious, super luxury apartments
offer a glimpse of living in paradise.



SWIMMING POOL

Elite unwinding, *elite* living.



GYMNASIUM



LIBRARY & RECREATION ZONE



INDOOR ACTIVITIES



2 TIER PARKING



GARBAGE CHUTE



POWER BACK-UP FOR
COMMON LIGHTING



CAMERA SURVEILLANCE

Better than the *best*.

SPECIFICATIONS

COMMON AREAS

Flooring: Granite / Vitrified Tile
Lobby: Large wide granite
Staircase: Granite and stainless railing
Elevators: Good quality, size 10-12 persons and generator back-up to ensure 24x7 functioning

INFRASTRUCTURE

Structure: RCC framed structure
Walls: Concrete block masonry, Red Brick with Plaster & POP smooth finish
Paint: TOP finished Plastic Paint / Weather Coat
Flooring: Hall & dining - Italian marble, Rooms - Vitrified / Wooden
Main Doors: Teak wood frame with polished shutter and good quality lock fittings
Internal Doors: Solid wooden frame with flush doors
Balconies & Windows: Heavy aluminum section with mosquito mesh
Provision for: Split Air Conditioner

BATHROOMS

Aesthetic Washrooms: Sanitary ware and CP fittings of good designer brands
Flooring: Anti-slip tile flooring with wall cladding / cladding in shower area
Vanity Counter: Counter in all bathrooms
Provision for: Shower partitions, Exhaust fans

KITCHENS

Granite Counter Top: With 2" rising above the counter
Sinks: Quality SS bowl in kitchen

ELECTRICAL

Electrical Points: Ample points with modular switches of best brands
Air Conditioning: Provision for ACs in living, drawing and all bedrooms

SECURITY

Surveillance Camera: For common areas
CCTV surveillance: At security risk zones, video door phone
Walled Campus: 24x7 Security personnel to man the main gates and other locations
Phones: Direct intercom connectivity in every apartment

UTILITIES

Utility Room: Out of sight, separate space for your domestic needs with washing machines and dishwasher points



BCM
Pride

Site plan



Block B
(Phase - 2)

Block A
(Phase - 1)

2 BHK
FLAT NO.: A-3

3 BHK
FLAT NO.: A-4

4 BHK
FLAT NO.: A-1

5 BHK
FLAT NO.: A-2

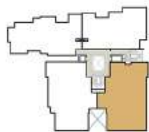


NORTH



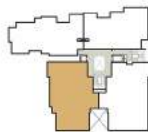
4 BHK
Block - A

FLAT NO.: **A-1**
B./UP AREA: **2154 SQ.FT.**
(201 SQ.M.)
S.B./UP AREA: **3080 SQ.FT.**
(287 SQ.M.)



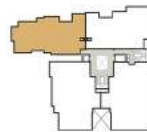
4 BHK
Block - A

FLAT NO.: **A-2**
B./UP AREA: **2142 SQ.FT.**
(199 SQ.M.)
S.B./UP AREA: **3063 SQ.FT.**
(285 SQ.M.)



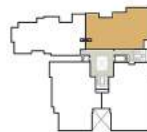
3 BHK
Block - A

FLAT NO.: **A-3**
B./UP AREA: **1865 SQ.FT.**
(174 SQ.M.)
S.B./UP AREA: **2667 SQ.FT.**
(248 SQ.M.)



3 BHK
Block - A

FLAT NO.: **A-4**
B./UP AREA: **1776 SQ.FT.**
(165 SQ.M.)
S.B./UP AREA: **2540 SQ.FT.**
(236 SQ.M.)



About the *BCM* group:

The foundation of the BCM Group was laid six decades ago by Late Shri Badaichandji Mehta along with his brother Late Shri Jugrajji Mehta on the time-tested values of integrity, honesty and trust. Since then, the Group has gone from strength to strength and today is counted among the leading names in the real estate development field of Central India with landmark residential and commercial projects to its credit. Driven by a vision to bring world-class living and working experience to the region, the BCM Group is changing the skyline of the city for the better.

Previous projects:



BCM CITY

BCM HEIGHTS

BCM
PARK

BCM PARADISE

BCM PLANET

LOCATION MAP



BCM
G R O U P

Office: UG-21, BCM Heights, Shri Badalchand Mehta Marg, Indore-452 010. Tel: 2579781-84, 4266157-58

Site: Plot No. 51-72, Kanchan Bagh, Indore.

For details call: **78693 77771, 94250 62407**

Architect:
AADHARSHILA
Sanjay Shrivastava

Member:
CREDAI
Confederation of Real Estate
Developers' Associations of India

Necessary approvals / permissions • IMC Senction 1122/IMC dt. 20.04.2015

Disclaimer : The contents/images of the brochure are purely conceptual and are to facilitate display and have no legal binding. The developers reserve the rights to amend the layouts, plans, dimensions, elevations, colour schemes, amenities and specifications without any notice or intimation. All disputes and conflicts whatsoever are subject to Indore Jurisdiction only.