



## ADDRESS

### **Navkar Heights**

Opp. to Lions Karnavati Eye Hospital,  
near LML school,  
Beside Ognaj Jain Panch Tirth Derasar,  
S.P Ring road extension, Ognaj

## GET IN TOUCH

**Call** : 98-98-32-32-38

**Website** : [www.navkarheights.com](http://www.navkarheights.com)

# NAVKAR

## HEIGHTS

EXPERIENCE THE AFFORDABLE LUXURY



## **AN OPTIMUM RESIDENTIAL PROJECT**

Located at the most prime location, an affordable housing that caters all your dream home requirements.



SPACIOUS  
AND AFFORDABLE  
LIVING

“

Home is where love resides,  
memories are created,  
family and friends belong  
and laughter never ends.





HUMBLE AND SUSTAINABLE MIRACULOUS LIVING



**IN THE PINNACLE OF AN  
UPCOMING LANDMARK!**

**SURROUNDED BY ROADS ON ALL SIDES.**



**01**

**02 MINUTES**

- Ognaj Panchtirth Deraser
- LML School
- Karnavati Eye Hospital
- AMTS Station

**02**

**05 MINUTES**

- A.I.M.S Institute
- Sardardham
- Ahmedabad Institute of Technology
- Avishkar School

**03**

**10 MINUTES**

- K.D. Hospital
- Vaishnodevi Mandir
- Nirma University
- Science City Circle
- Umiyadham

**LAYOUT :**  
**GROUND FLOOR :**  
**SHOPS**



**LAYOUT :**  
**FIRST FLOOR**  
**SHOPS & FLATS :**

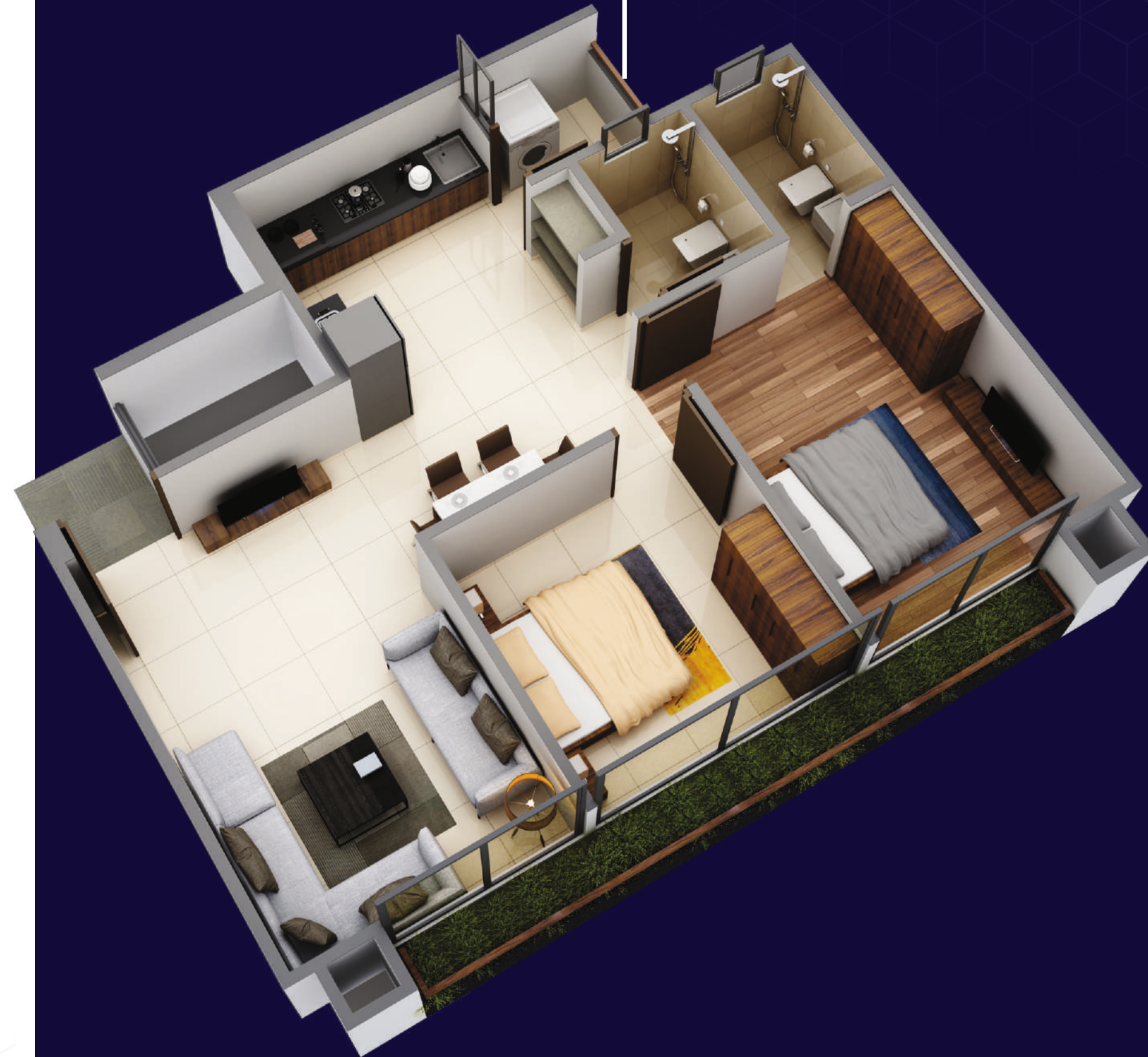
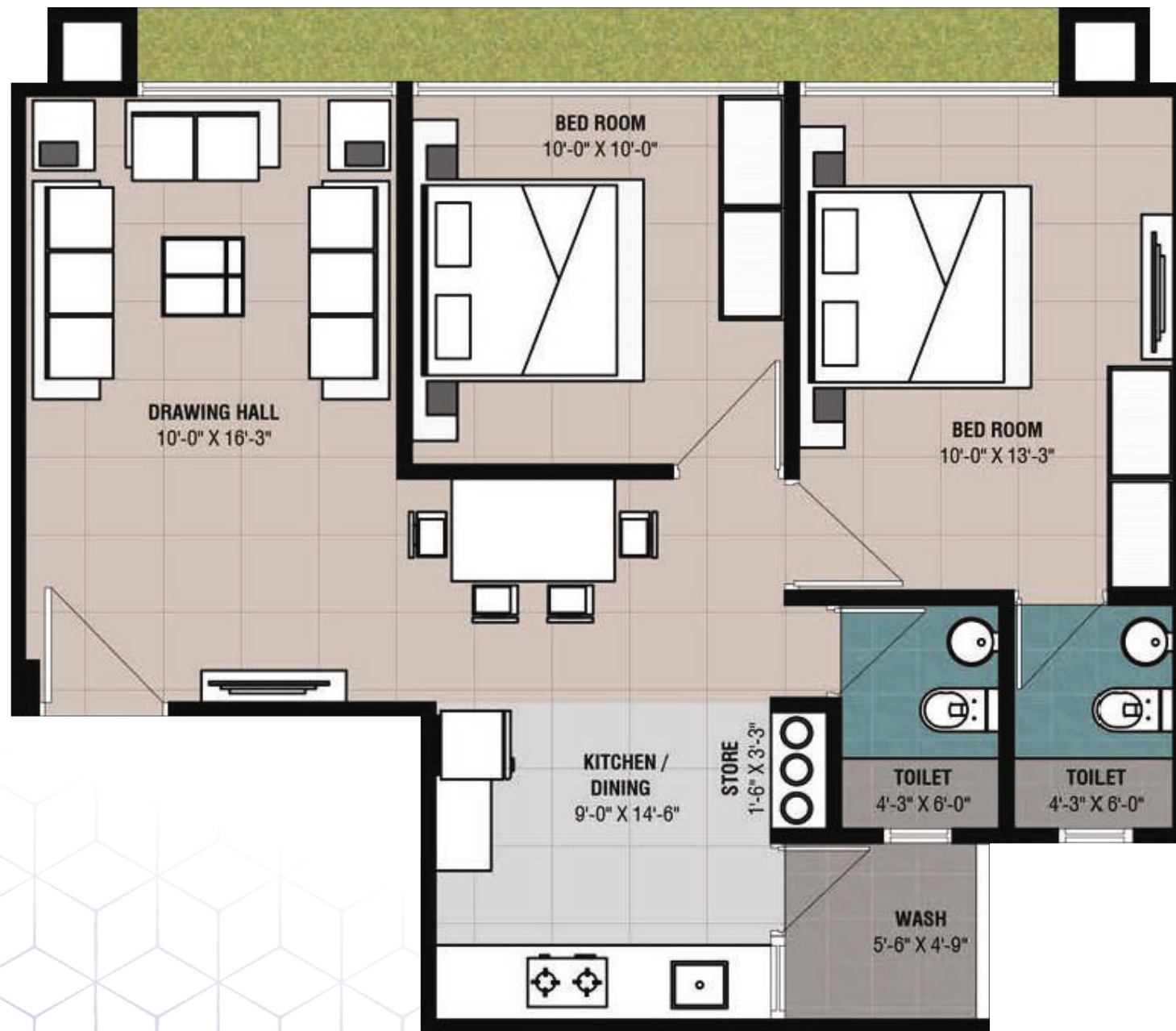


# LAYOUT : SECOND FLOOR SHOPS & FLATS :



# 2BHK 3D SECTION

(Block A, B, C, D, E, H, I, J)



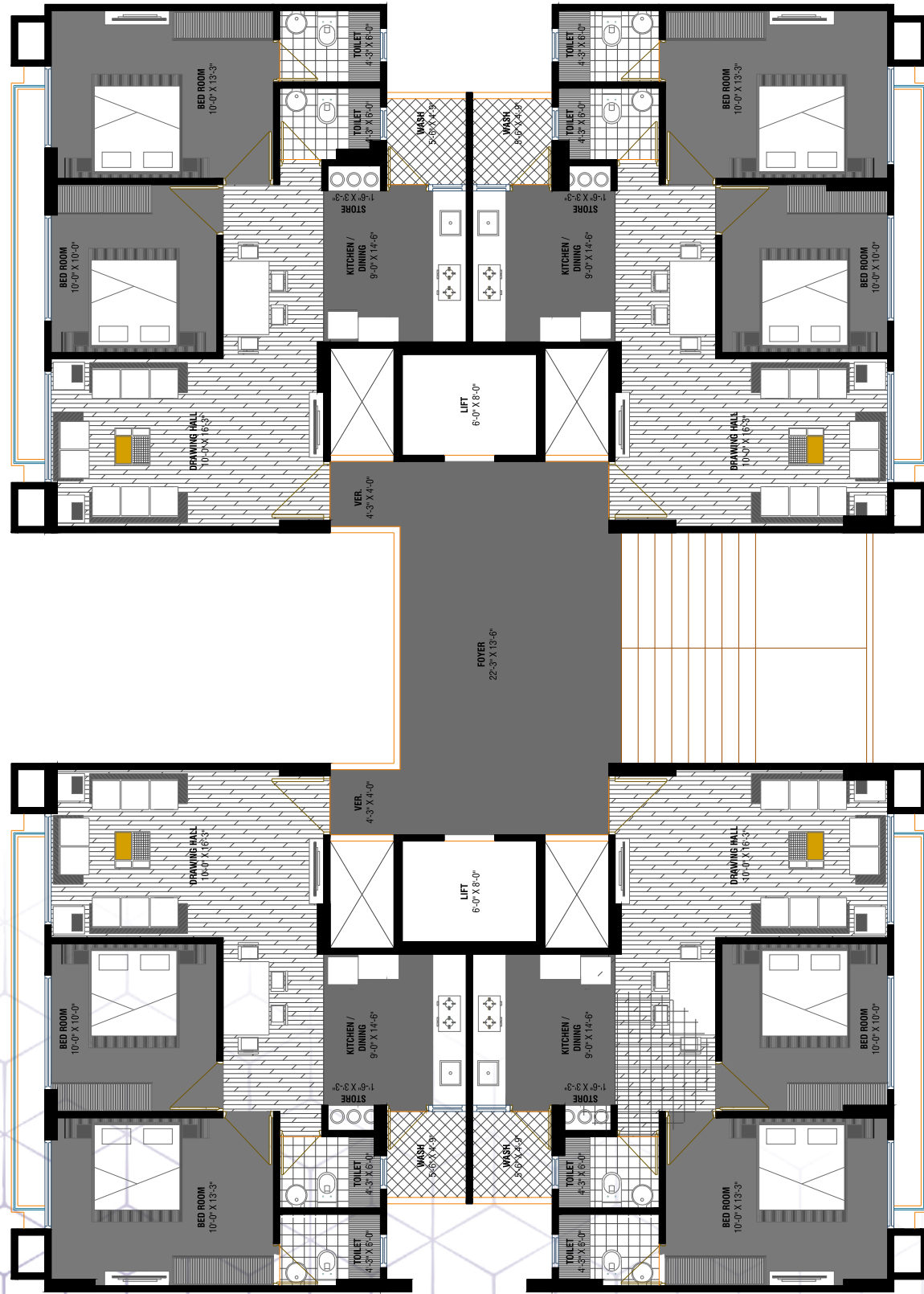
# 3BHK 3D SECTION

(Block F & G)



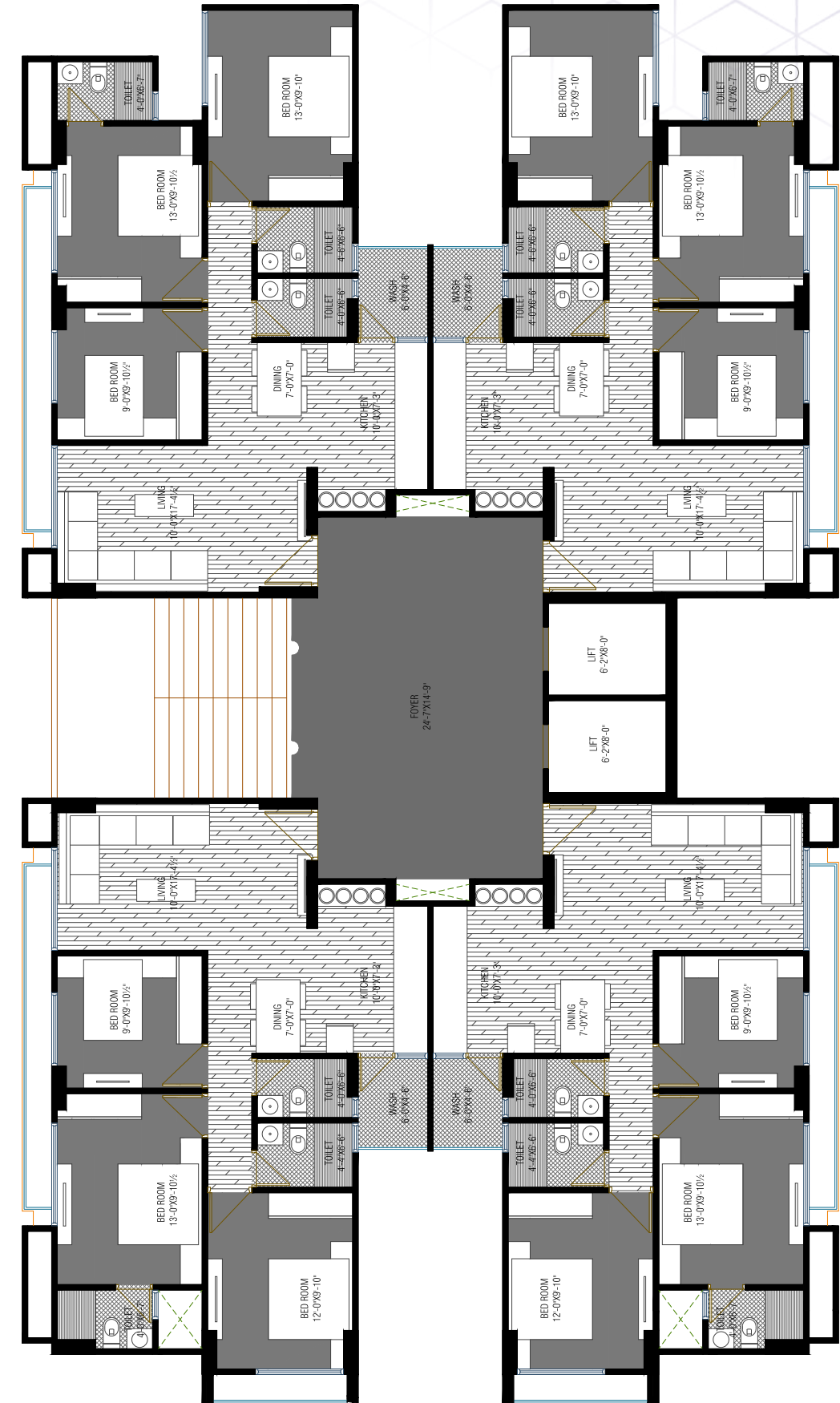
# 2BHK Unit Plan

(Block A, B, C, D, E, H, I, J)



# 3BHK Unit Plan

(Block F & G)





## SPECIFICATIONS :

**FLOORING**  
Polished vitrified & glazed flooring

**KITCHEN**  
Granite platform with SS sink  
Designer tiles Dedo

**DOORS**  
Decorative Main Door with wooden frame & Other flush doors with Oil Paint

**WINDOWS**  
Domal Aluminium section  
Polished granite stone sill

**BATHROOM**  
Decorative glazed Tiles upto Lintel Level,  
Good quality of concealed Plumbing & CP fittings

**ELECTRIFICATION**  
Concealed Copper Wiring with Modular Switches MCB distribution Panel & adequate points as per architect design

**COLOUR**  
Internal smooth finish plaster with Putty Finish  
External plaster finish with 100% Acrylic paint

**WATER TANK**  
Over head water tank in each block  
24 hours water supply

**TERRACE**  
China mosaic flooring to ensure water proofing and reduce heat transfer




## BUILDING AMENITIES

 Elegant Entrance Gate

 CCTV Camera Surveillance


 Landscaped Garden

 Children Play Area

 24 Hr Security

 Well equipped GYM

 Yoga and meditation area

 Senior Citizen Sit Out Area

 Net Cricket Setup

 Two Lift In Each Block

 Indoor Games

 Two Basement Parking

 Huge Foyer And Staircase Size

 Fire Safety System

## SPECIAL NOTES :

The developers reserve the rights to change or revise or make any modifications, additions, omissions or alterations in the scheme as a whole or any part there of or any details there in, at their sole discretion without any prior notice. Such changes would be binding to all the members.

All the architectural and interior views in brochure are computer graphic simulated interpretation of the actual property.

All the dimensions given are approximate & from unfinished surfaces.

This brochure is just for an easy presentation of the project and should not be treated as a legal document.

Additional details as per attached leaflet here with.

ARCHITECT  
9TH STREET ARCHITECTS

M.E.P.  
AQUA UTILITY DESIGNS &  
MANAGEMENT PVT. LTD.

STRUCTURE  
AMEE ASSOCIATES

# NAVKAR HEIGHTS

