

Builder & Developers:



Corporate Office:

Head Office: 37, Virat-2nd Complex,
Shiv Nagar, Behind St. Anselms School, Niwaru Road,
Jaipur-302012 (Raj.)

Corp. Office: 517, 5th Floor, Vaibhav Tower, Vaishali Nagar, Jaipur (Raj.)
Email:- viratbuildhome@gmail.com | web:- www.viratgroupjaipur.com



Architects:

ANOOP GUPTA & ASSOCIATES

Architects & Interior Consultants
E MAIL : anoop.portico@gmail.com



Interior designer:

DIS

Architects & Interior
B-41, Parth Sarthi (Basement) Hem Marg,
Sunder Singh Bhandari Nagar, Swez Farm Jaipur.
E MAIL : info@disarchitects.com



THE ULTIMATE IN LUXURY LIVING, 2, 3 & 4 BHK APARTMENT !



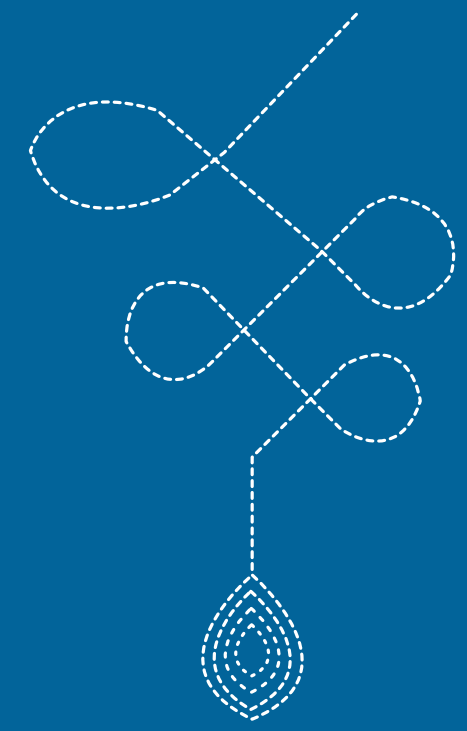
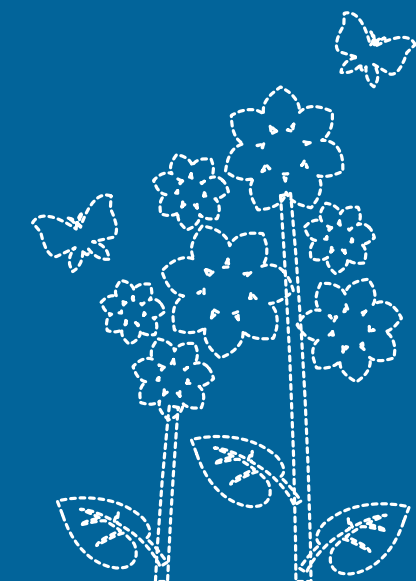
welcome

to Virat Krishnav

Virat Krishnav is a residential development where tranquility and modernity finds harmony in a picturesque setting.

The residences here offer the luxury living with refreshing panoramic view. The breathtaking landscape and exquisite architecture will create the ambience of a truly international gated community, where everyday will start with a fresh page. Colors, textures, tastes, scents, sound will be heightened by the crisp open air that will connect you with nature, nurturing the rare and real moments of life.

Living options of 2 ,3 & 4 bedroom residences.



PEACE
CHEER
LAVISH
UNIQUE
HAPPINESS
TRUST
SPACE

What do you wish the most...?

A secret desire to enjoy the **lavishness** in its true sense...

A **trustworthy** friend...

A **unique** lifestyle of your own...

A **peaceful** life ...

All that your heart wished is about to be fulfilled with Virat Krishnav.

Let these 2, 3 & 4 BHK Avant-garde lifestyle apartments be the answer to your every deepest wish and desire. The set of elegant abodes elevating both in stature and style take you to the flight of eminence and eternal happiness



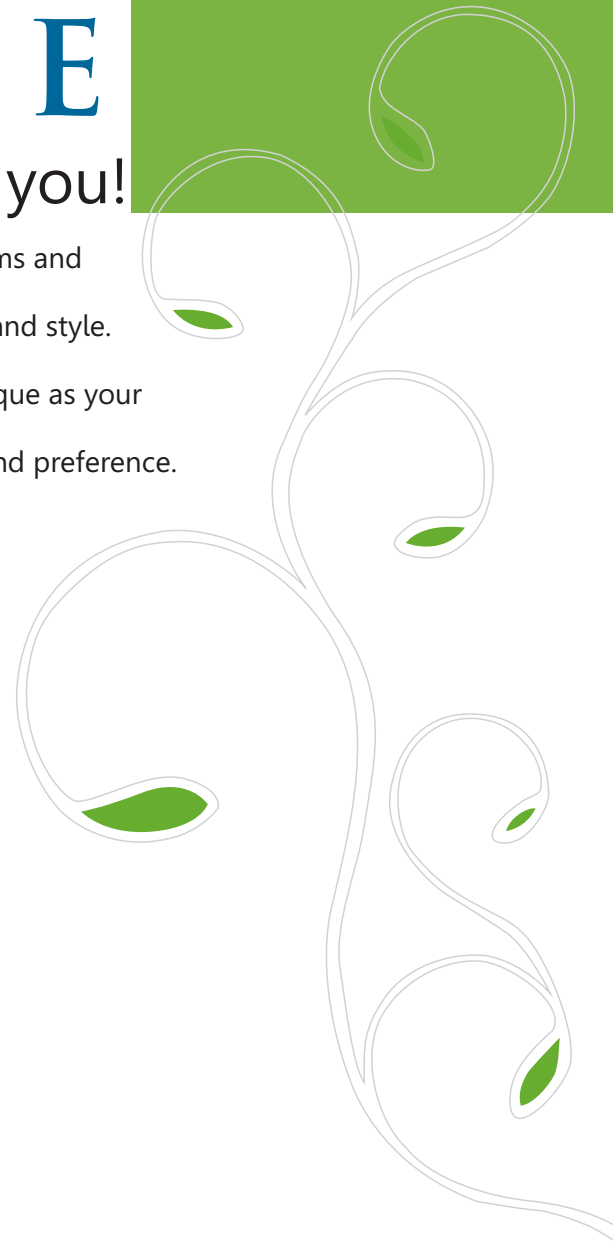
Homes as

UNIQUE

as you!

You love to live in your own way. You have different dreams and different aspirations. In short, you have your personality and style.

Now find a serene homecoming in a home that is as unique as your personality. An abode that speaks of your distinct taste and preference.



An ambiance you can
TRUST
for your loved ones!

For your dearest ones, you'd always wish a safe haven where they can live happily and heartily. With state of the art amenities designed keeping in mind every age group along with stringent security measures at VIRAT KRISHNAV creates that trusted and totally joyful ambiance.



A lifestyle as

LAVISH

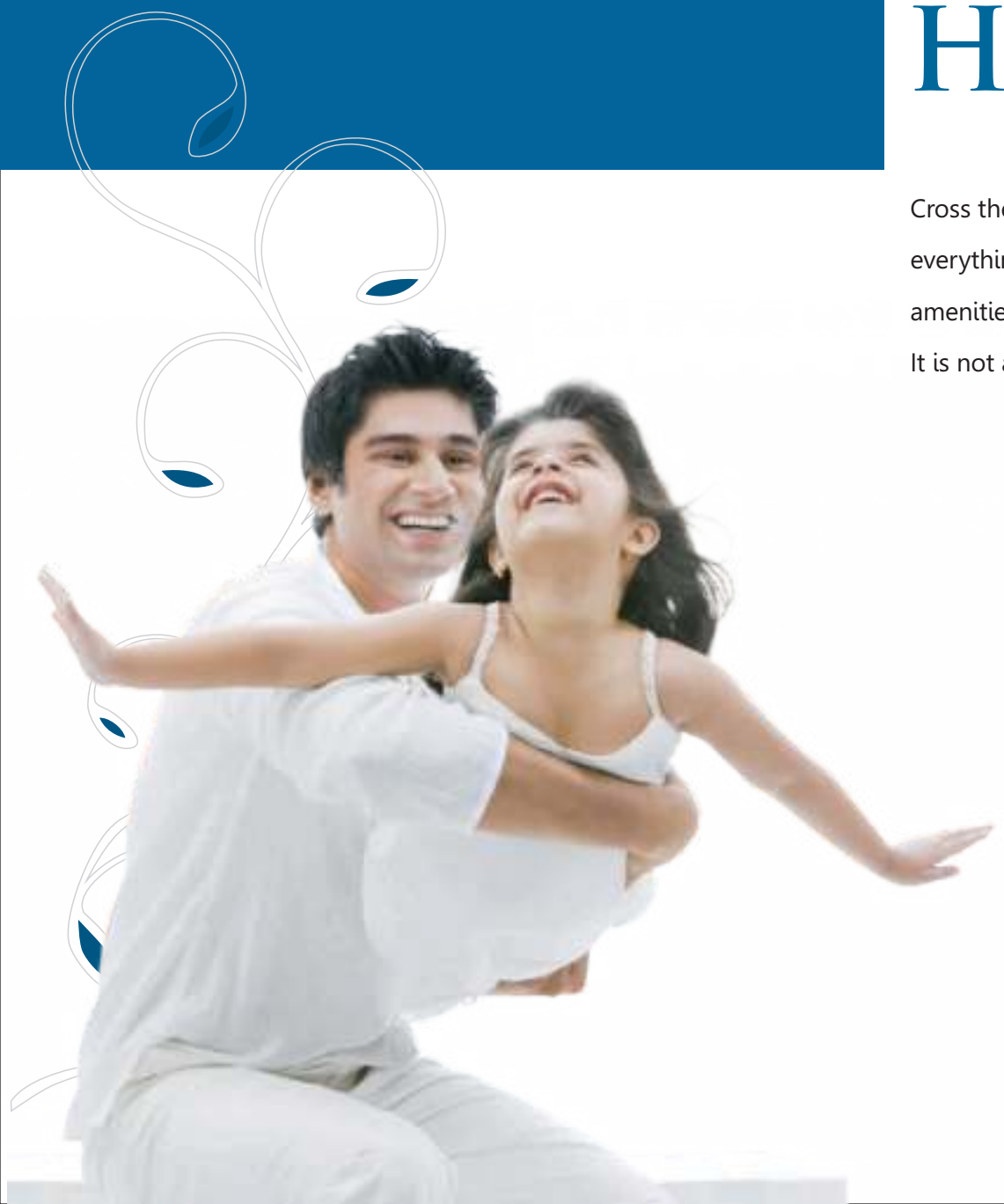
as you can imagine!

It is easy to find a house ... but VIRAT KRISHNAV is more than a house. It is a home of your dream, of your desire. A perfect abode which has luxurious living experience you always wished for.



Homes with a promise of **HAPPINESS**

Cross the threshold of VIRAT KRISHNAV and enter in a happy environment where everything is designed and presented the way you always dreamt. From lavish amenities to advantageous location, from artistic architecture to safe planning... It is not a Home. It is a promise of your HAPPINESS that we have fulfilled.



A lifestyle that spreads

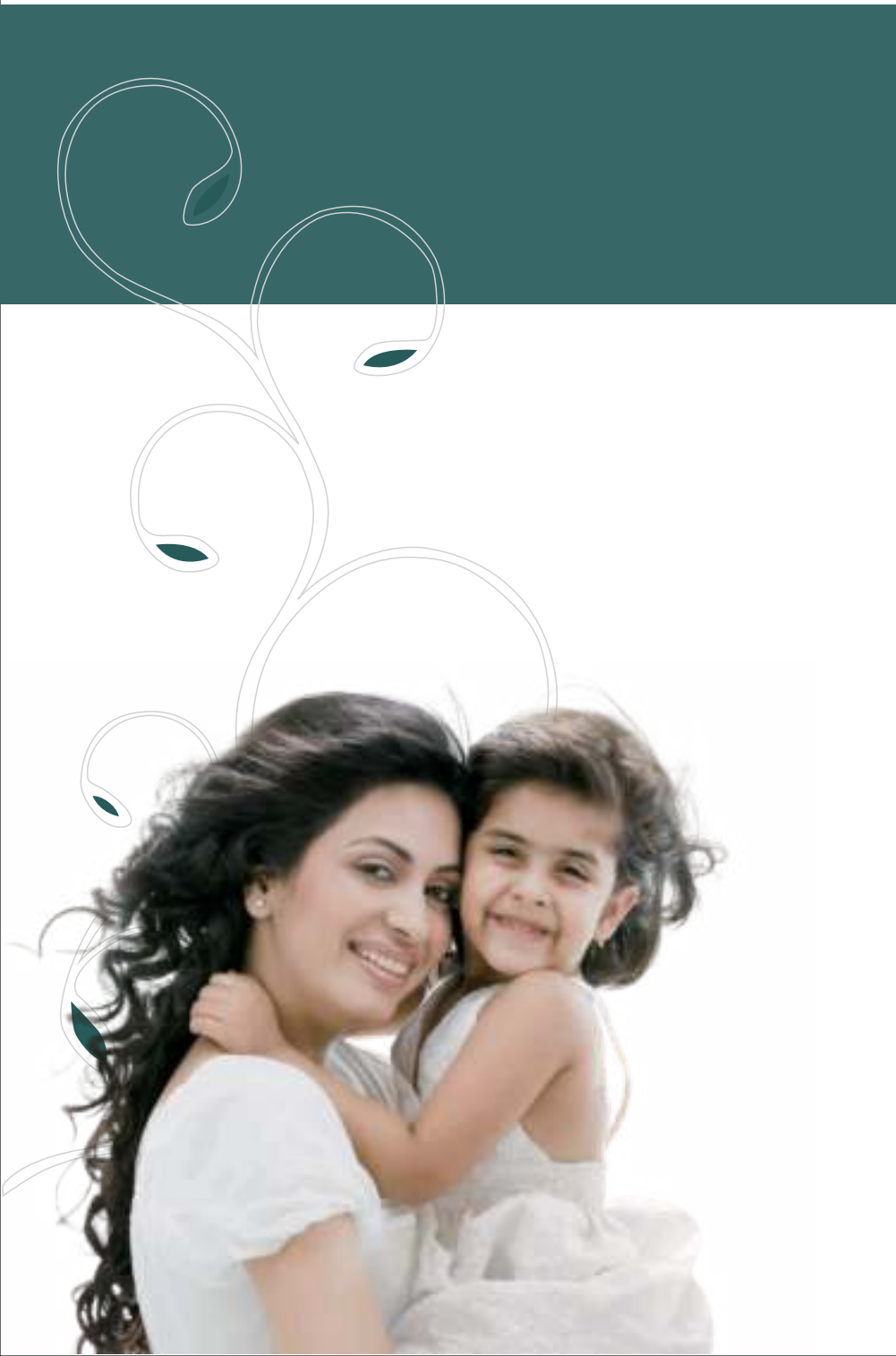
C H E E R

Chirping sound of your little ones, their joyful and innocent laughter filling the air is the best and the biggest gift you can give yourself. At VIRAT KRISHNAV, the cheerful gait and happy faces of your kids will always refresh your homecomings.



An environment that invokes
P E A C E

Home is where heart and serenity is. Life at VIRAT KRISHNAV
has lavishness with an ample dose of serenity and calmness.



A life that has

S P A C E

for grandeur

With impressing elevation and aesthetic architecture offering enough space, VIRAT KRISHNAV makes for grand lifestyle. it stands tall will sophistication and style along with amenities like huge party lawn and spacious multipurpose hall to add grandeur and grace to your every occasion.



Ground Floor Plan



Indoor Amenities

- 01. Party Hall
- 02. Entrance Lobby
- 03. Cafeteria
- 04. Kids Zone
- 05. Table Tennis
- 06. Indoor Games
- 07. Yoga
- 08. Gym
- 09. Hall
- 10. Steam
- 11. Jacuzzi



GAME ROOM



GYM



TABLE TENNIS



YOGA



HALL

Typical Floor Plan



Legends

- 01. Entrance Gate
- 02. Party Lawn
- 03. Badminton Court
- 04. Swimming Pool
- 05. Kids Pool
- 06. Parking
- 07. Basketball Academy
- 08. Cricket Pitch
- 09. Sit Out
- 10. Temple
- 11. Gazebo
- 12. Lawn
- 13. Kids Play Area
- 14. Fountain

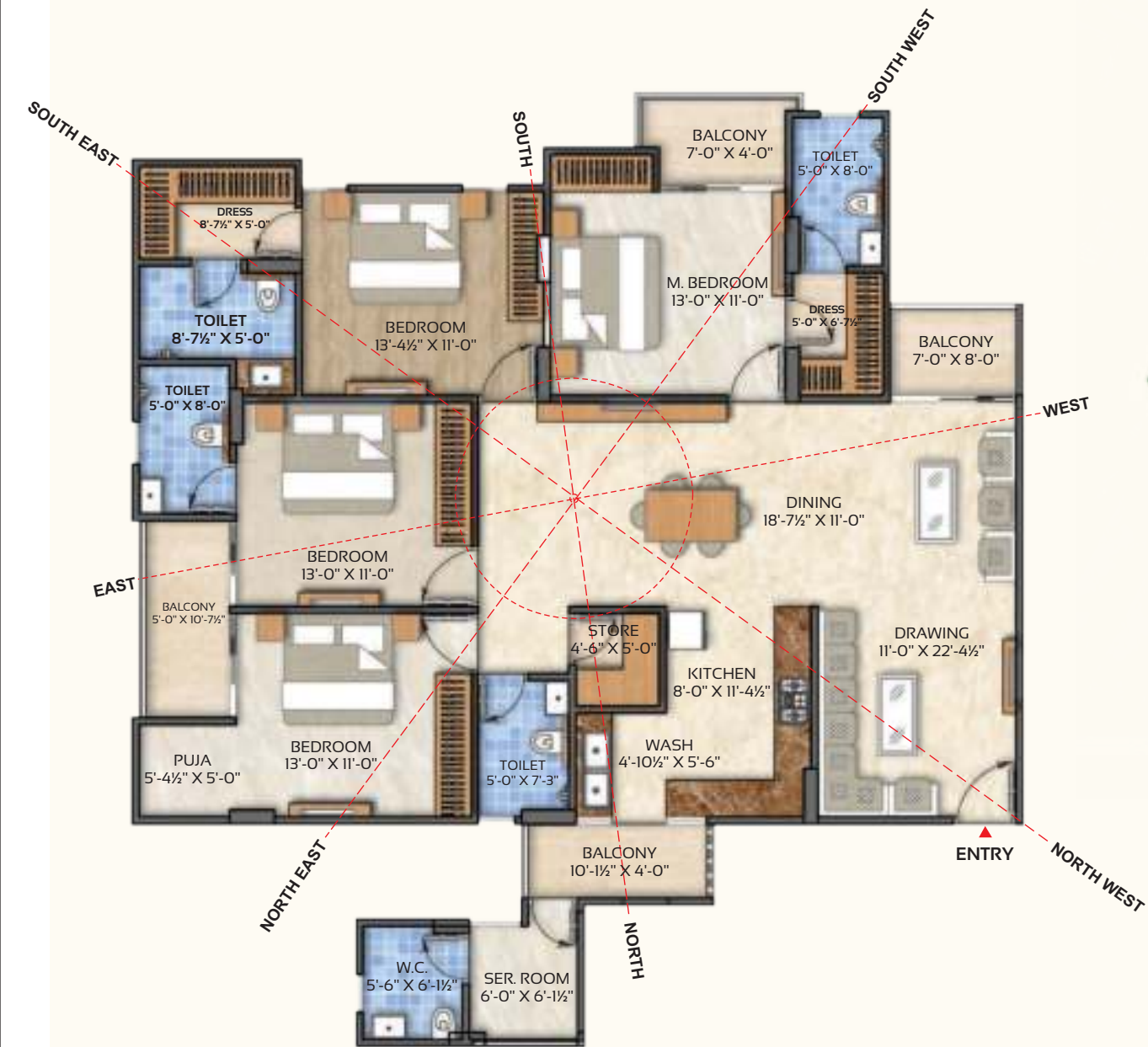
4BHK

Unit Floor plan

Carpet Area=1614 sq.ft.

Built Up Area =1887 sq.ft.

Super Built Up Area= 2516 sq.ft



KEY MAP



3BHK

Unit Floor plan

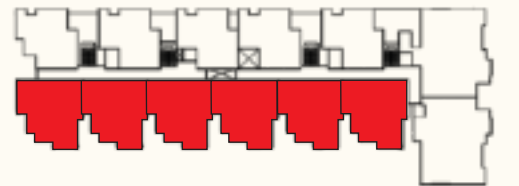
Carpet Area= 989 sq.ft.

Built Up Area =1176 sq.ft.

Super Built Up Area= 1568 sq.ft



KEY MAP



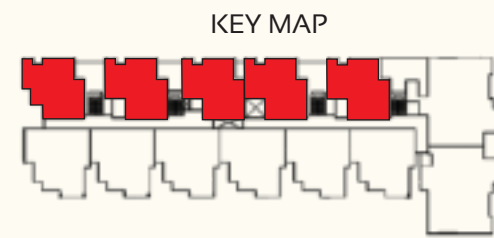
2BHK

Unit Floor plan

Carpet Area= 773 sq.ft.)

Built Up Area = 954 sq.ft.

Super Built Up Area= 1272 sq.ft



Amenities :-



ACTIVITY ROOM



MINI THEATER



MULTIPURPOSE HALL



GYM



YOGA



STEAM & MASSAGE



BADMINTON COURT



GAMES ROOM



WATER FEATURE



SENIOR CITIZEN GARDEN



SAND PIT



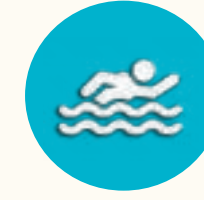
BARBEQUE/ CAFE



OUTDOOR LOUNGE AREA



FUNCTION LAWN



ADULT SWIMMING POOL



KIDS POOL



BASKETBALL



CHILDREN PLAY AREA



JOGGING PATH



TRIM TRAIL STATION



CRICKET NET



TEMPLE



TABLE TENNIS

Salient Features :-

- ▲ A project by Virat Group reputed and trusted group
- ▲ Designed only 2,3&4BHK Flats with Commercial Spaces
- ▲ Desined to exceed the expectation of these who Belive in a healthy and Happy Life Style
- ▲ Premium Construction Quality
- ▲ High tech & well equipped Clubhouse
- ▲ Vastu Oriented Apartments
- ▲ Functionally Designed with Pleasant Architecture
- ▲ Roof top Pool
- ▲ Roof Top Tennis Court
- ▲ Wi-fi Zoon
- ▲ Roof Top Gym & Yoga
- ▲ 100% Power backup (Silent DG sets for lifts & common areas)
- ▲ High Tech Security Systems with C.C. TV
- ▲ Reserved car parking for each flat
- ▲ Efficient Fire Fighting and Rain water Harvesting system
- ▲ Earth Quake Resistant Framed Structure
- ▲ Acupressure Track
- ▲ Gas Pipe Line
- ▲ STP Plant
- ▲ Roof Top Kids Play Area

Specification :-

BEDROOMS

- Floor : Vitrified Tiles Flooring in Master Bedroom
Premium Class Flooring of Vitrified in Other Bedrooms
- Walls : Acrylic Paint on Putty (Asian/ Nerolac or Equivalent)
- Ceiling : Paint on Ceiling
- Wardrobes : Projected Wardrobes Space
- Door & Windows : Wooden / UPVC Door Windows

KITCHEN

- Counter : Black / Grey Granite Working Counters
- Fitting/ Fixtures : CP Fittings With Stainless Steel Sink, Provision for RO/Aquaguard Electric Points for Microwave/Mixer, Refrigerators etc.
Acrylic Emulsion Paint in Balance Area.
- Floor : Anti skid Tiles

BALCONIES

- Floor : Terazo/ Ceramic Tiles
- Ceiling : Paint on Ceiling
- Doors & Windows : UPVC / Aluminum Door Windows.

LIVING/ DINING

- Floor : Vitrified Tiles Laid in Designer Pattern
- Walls : Good quality paint
- Ceiling : Good quality paint
- Services : Provision for Air Conditioners
- Door & Windows : Wooden / UPVC Door Windows

TOILET

- Walls : Combination of Designer Tile and Good quality paint
- Floor : Anti Skid Ceramic Tiles.
- Ceiling : Paint on Ceiling
- Fixtures/ Assess : C.P. Fitting Premium Brand or Equivalent
- Doors : Tough ISI Mark Flush Doors
- Provisions : Provision for Geyser and Exhaust Fan
- Services : Provision for Air Conditioners
- Door & Windows : Wooden / UPVC Door Windows





LOCATION MAP



VIRAT KRISHNAV LOCATION

Every Measure has take to shield you from the madness of the city. How? Simply. By building an integrated township around Virat Group Projects. Only this one, in characteristic Virat Style, is unlike any other you've seen. This Virat Krishnav a setting worthy of a gem like Diamond.



LOCATION ADVANTAGE / APPROXIMATE DISTANCES

Dehli-Ajmer Express Way	1.5 kms
City Center	2 kms
Bus Depot	8 kms
Railway Station	7 kms
Education Hub	3 kms
Hospital	2 kms

Easy Connectivity from Walled City.
Well Developed Residential & Commercial Area.
Surrounded by Multiple Brand Market for your Daily needs.

Site Address:-
Khasara No. 183/329,231 & 233 Maharana Pratap Marg,
Next To Rangoli Garden, Vaishali Nagar West, Jaipur (Raj.)